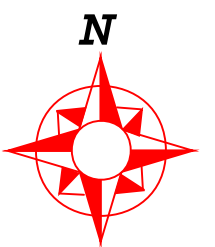
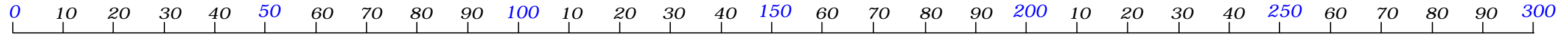


Tower of PortRoyal - Low Slope Roof Areas -3200 N.Port Royal Blvd.,Ftl, Fl.

March 12, 2009



[Graphic Sheet](#)



[Moisture Legend](#)

(0 - 25)

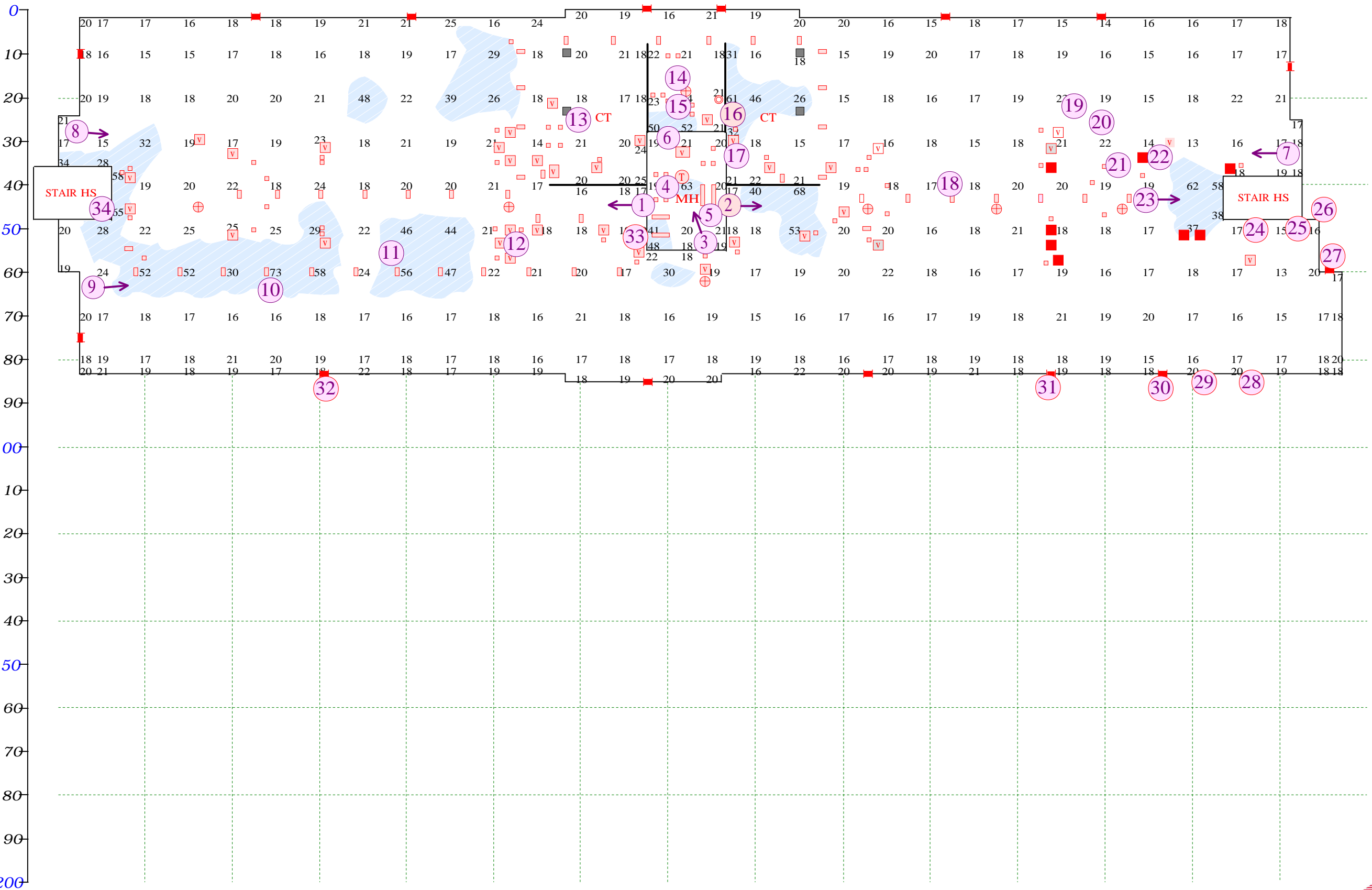
Dry Subsurface

(26 -UP)

Subsurface Moisture

[Penetrations](#)

- Pitch Pan
- Soil Vent Stack
- + Interior Drain
- Wall Scupper
- Concrete Column
- V Vent Curb
- AC AC Curb
- 1 Photo Location



LOW SLOPE ROOF AREA = 23,567 SQ.FT.